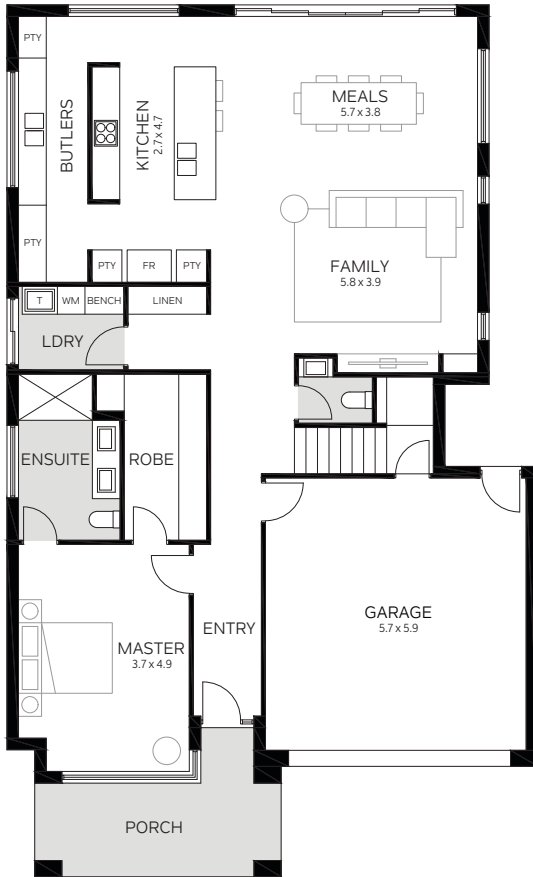




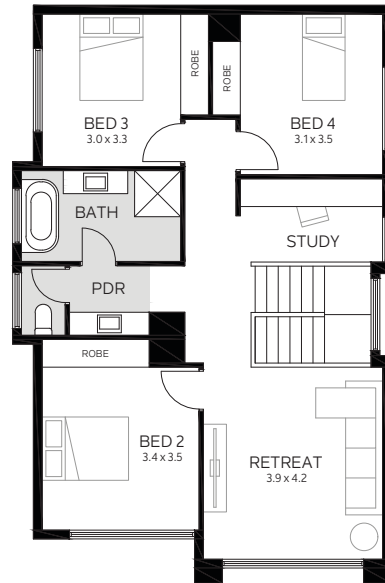
2018 MBA MULTI-AWARD WINNING BUILDER



BRADFORD
HOMES



GROUND FLOOR



FIRST FLOOR



Width 11.5m
 Depth 18.9m

Ground Floor Living 140.1m²
 First Floor Living 94.5m²
 Garage 37.8m²
 Porch 12.2m²

Total Area 284.6m²

1 GAWLER STREET LIGHTSVIEW

Open 1pm - 5pm
 Sat, Sun, Mon & Wed



Proudly brought to you
 by Scott Salisbury